

Photometric Report

05.07.2018 08:15:47


iLOX ILU-LED 48V

iLOX ILU-LED 48
ILU-System Lamp

Version 3/2018



Results:

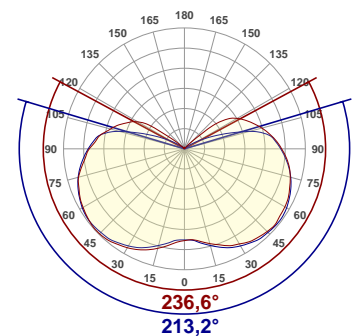
Output	180 lm	Peak	22,4 cd	Voltage	48,0 V
Power	1,8 W_{elec}	Radiated Power	0,560 W _{phot}	Current	0,038 A
Light Efficiency	99 lm/W_{elec}	Radiation Eff.	0,560 / 1,8	Frequency	0 Hz
Color Temp.	3000 °K 	Light Quality	CRI: 81,7 TMS30: 80,4 CQS: 80,7	Power Factor	1,0
				CIE X	0,437
				CIE Y	0,404

Beam Angle 0° / 90° 236,6° / 213,2°
at 50% of peak

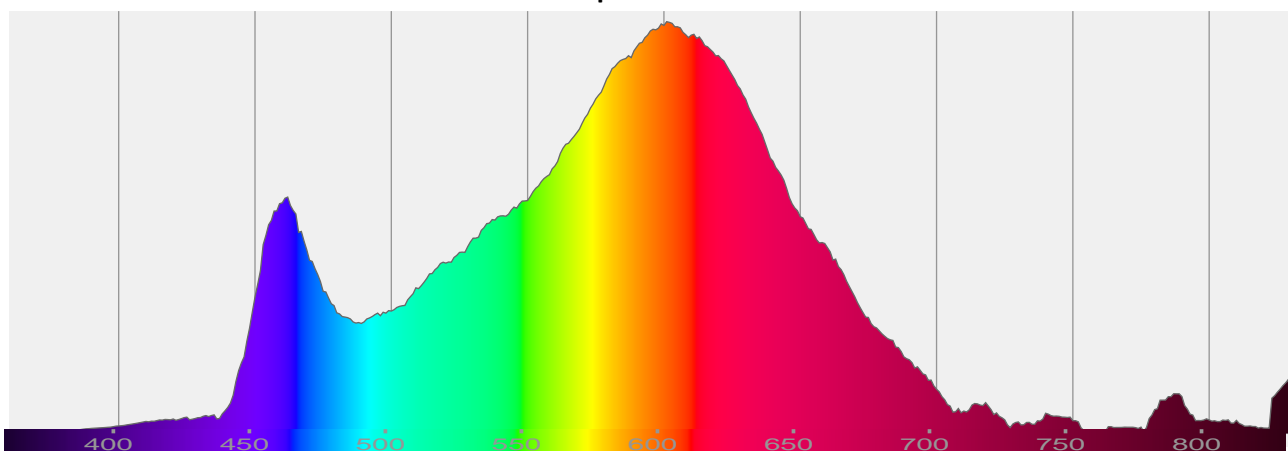
Field Angle 0° / 90° 264° / 243,9°
at 10% of peak

Cutoff Angle 0° / 90° 271,9° / 261,4°
at 2,5% of peak

Beam Angles at 50% of Peak
--- 0°Plane --- 90°Plane



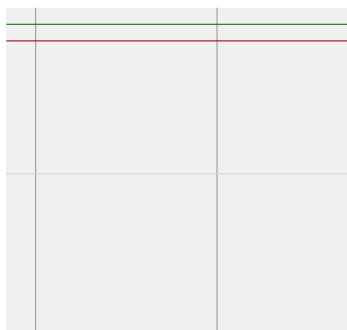
Spectrum



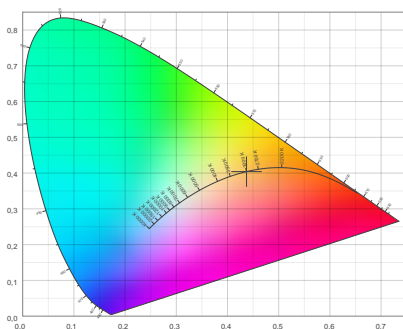
Photometric Report

iLOX ILU-LED 48V

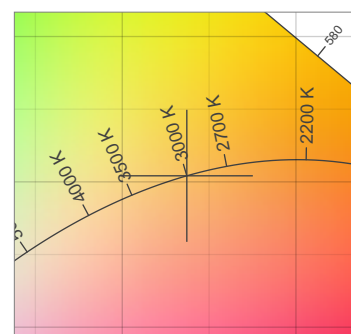
Power Diagram



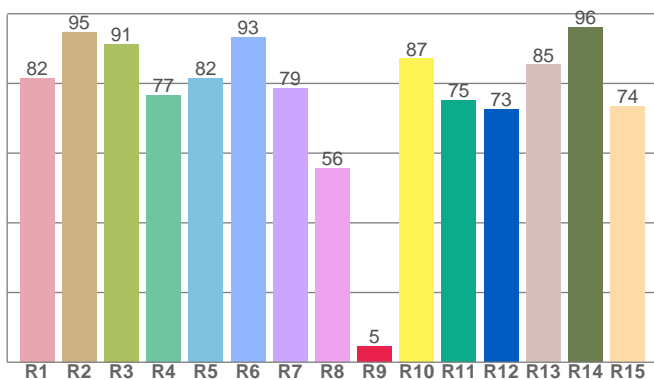
CIE 1931



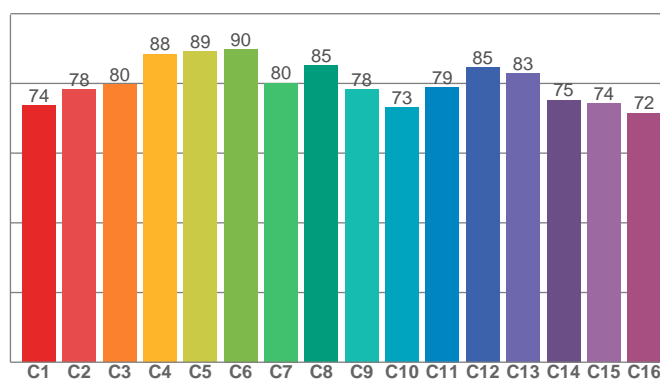
CIE 1931 zoom



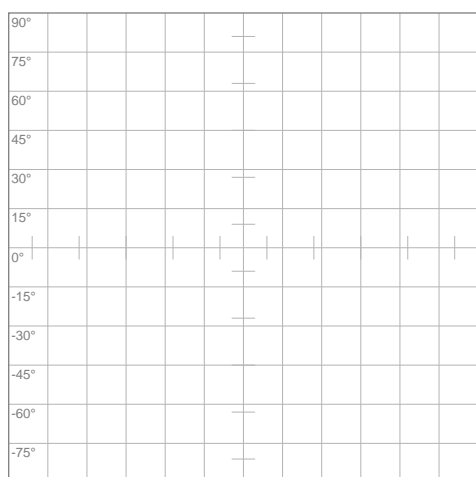
CRI



TMS 30



ISO candela diagram



- 15 cd
- 14 cd
- 12 cd
- 10 cd
- 9 cd
- 7 cd

Conditions:
 Number of c-planes: 32
 Candela at center: 17 cd

Linear distribution diagram

